

# Conlog's Revenue Protection Agenda





# AGENDA

- Who is Conlog, Our Story
- Company Overview
- The Way Forward

# Conlog Strategy

## *Our vision is to...*

*enable our customers to manage their energy to be effective and efficient by providing holistic solutions, ultimately to improve the quality of life for All.*



## *Our mission...*

*We are a metering company offering holistic solutions to Utilities to improve efficiencies in energy management, through quality products and services, by conducting ourselves in an open, transparent and ethical business manner.*



**CONLOG**  
Solutions for utilities

# Company Overview



- Solutions for today and tomorrow
- Strong brand awareness, in Africa
- Synonymous for superior quality
- Platform of excellence through innovation
- Global footprint
- Holistic metering approach

Conlog is a proudly African company that has been at the forefront of pioneering solutions since the inception of the South African metering prepayment industry in the late 1980s, meeting the needs of utilities worldwide.



# What we deliver

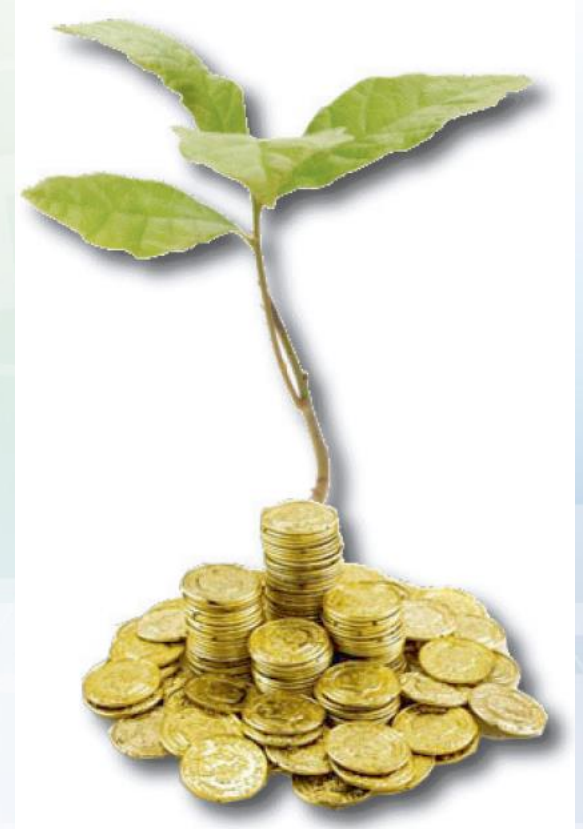


- Project Management
- Infrastructure Design
- Data Management
- Business Intelligence
- Service Level Agreements
- Service Centre and Support
- Specialist Project Engineers



# Market Challenges - Opportunities

- Revenue protection and electricity theft
- Holistic solution offer required
- Energy efficiency and energy management
- Interoperability
- Consumer expectations: cost, data privacy

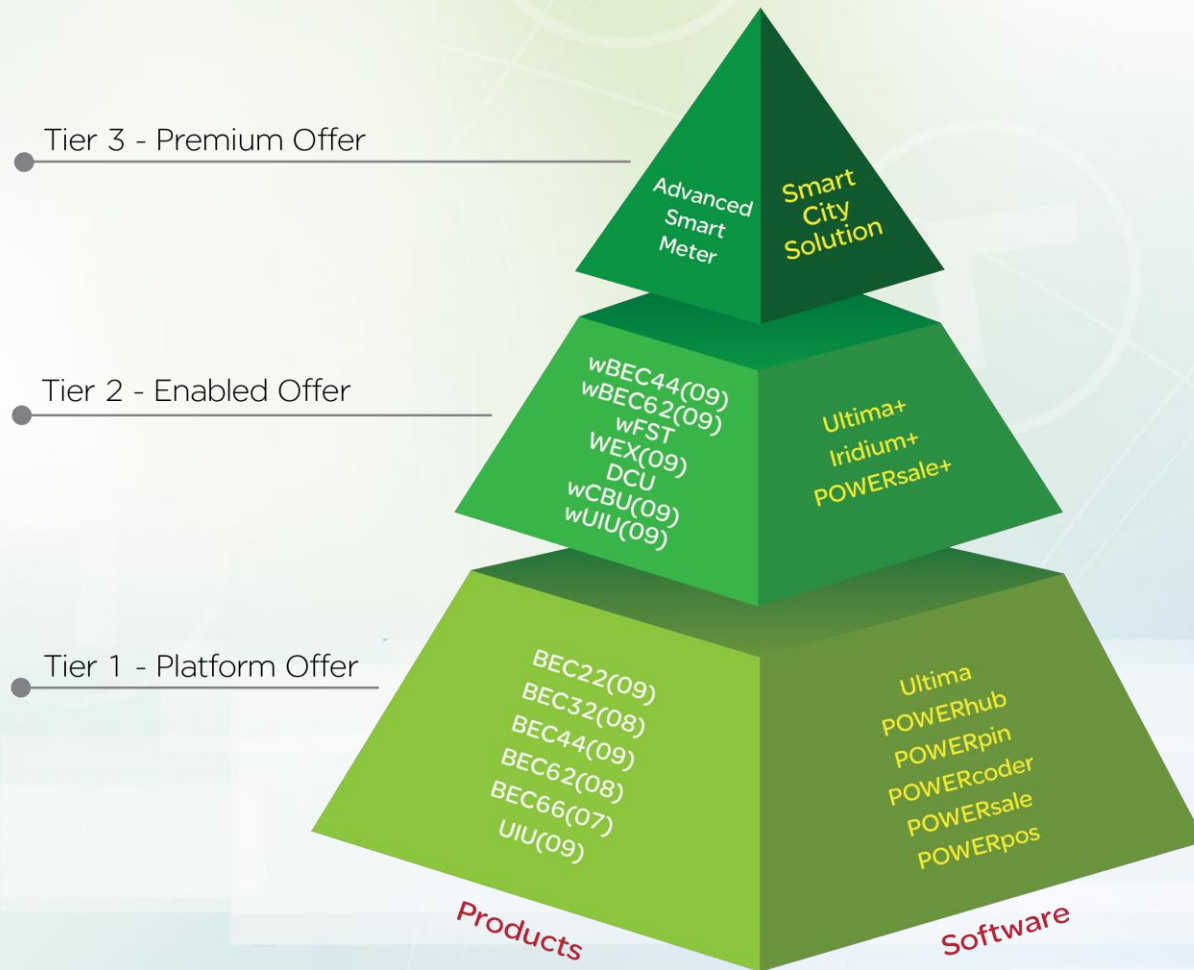


# Benefits for the Utility

- Zero consumer debt
- No meter reading required
- Automates disconnections / reconnections
- Accurate and frequent consumer records
- Reduced electricity consumption (average 20%)

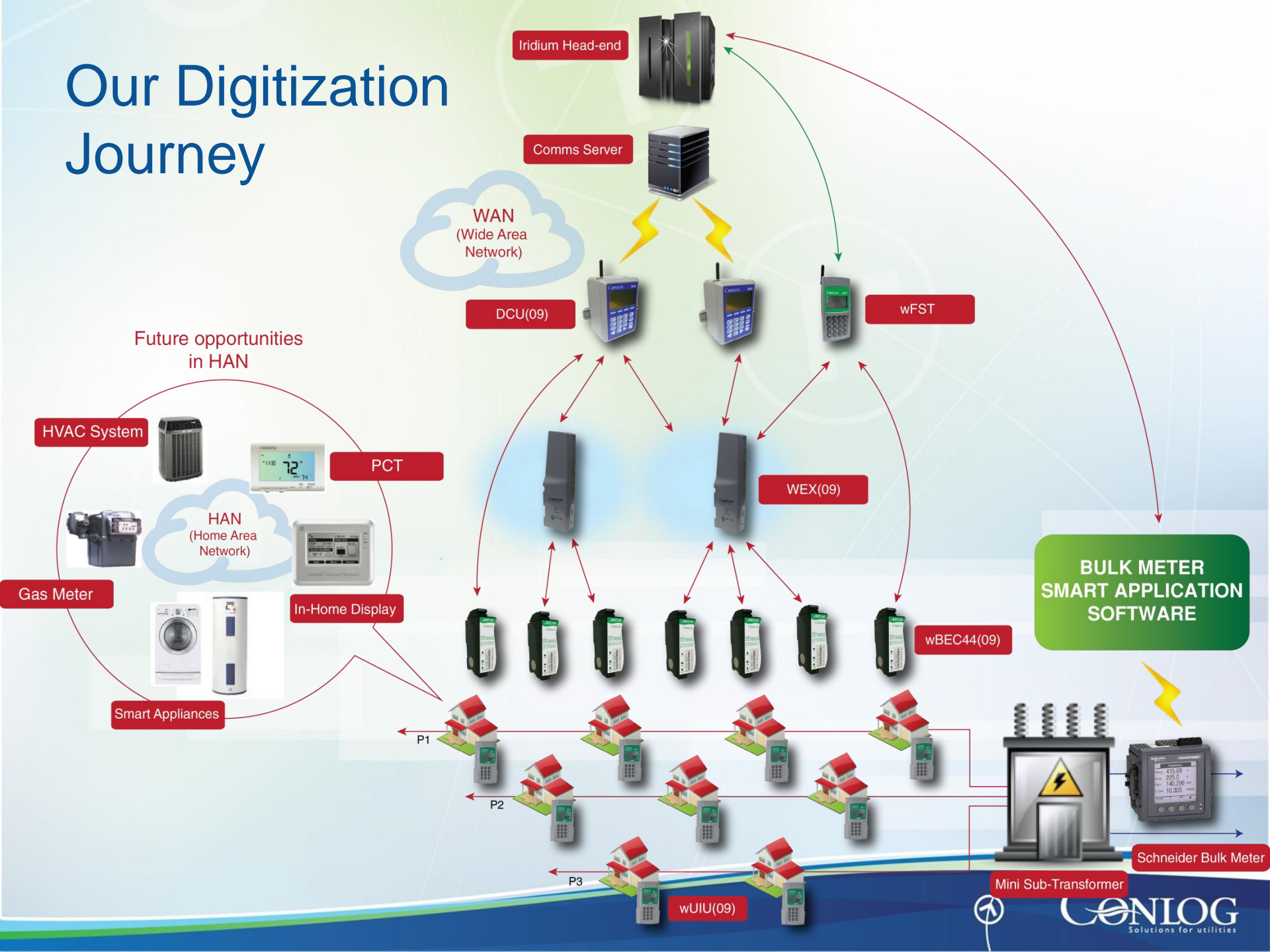


# Conlog Strategic View: Digitize Everything!





# Our Digitization Journey





# *Conlog AMI system components*

## SINGLE PHASE COMBO METER RANGE



**BEC22(09)**



**BEC23PE**



**BEC23PL**

## SINGLE PHASE SPLIT METER RANGE



**BEC44(09)**



**wBEC44(09)**



**BEC42(05)**

## THREE PHASE COMBO METER RANGE



**BEC32(08)**

## THREE PHASE SPLIT METER RANGE



**BEC62(08)**



**BEC66 250A**



## AUXILLARY PRODUCT RANGE



**DCU(09)**



**WEX(09)**



**WMI(09)**



**wFST(09)**



# Typical Configurations



**One Way BEC44(09)**



**One Way BEC44(09)**



**Four Way BEC44(09)**



**Eight Way BEC44(09)**

