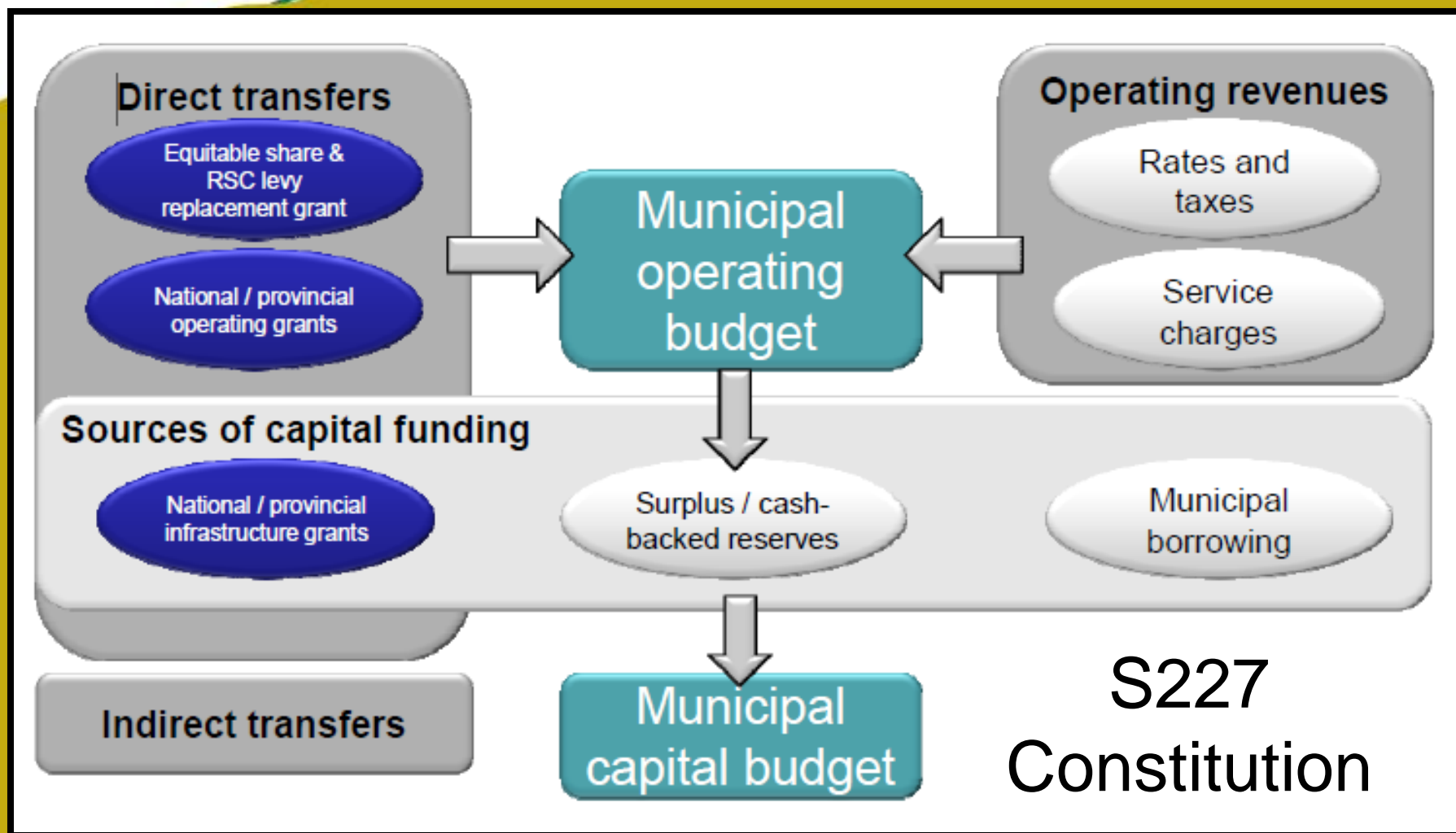




*Reaga*  
*PoloKwane*

# BUDGET AND TREASURY OFFICE



# Constitution of RSA

**229. Municipal fiscal powers and functions.**—(1) Subject to subsections (2), (3) and (4), a municipality may impose—

- (a) rates on property and surcharges on fees for services provided by or on behalf of the municipality; and

Section 229 of the Constitution of the Republic of South Africa of 1996, sanctioned the municipality to imposed rates on property and surcharges on fees for services provided by or on behalf of the municipality.

What are the Main Service Rendered By Municipality for which the Municipality may Impose Surcharges

- ☐ Electricity
- ☐ Water
- ☐ Refuse
- ☐ Sewerage
- ☐ Fines

# Polokwane Local Municipality RPU Working Group

## The Revenue Protection Unit (RPU)

**Revenue  
and  
Customer  
Care**

**Energy  
Services**

**Water and  
Sanitation**

**Planning  
Development**

**Law  
Enforcement**

## RPU Responsibilities / Activities

- ☐ Raid audits
- ☐ Customer services
- ☐ Billing and Credit control
- ☐ Tariff development
- ☐ Investigation process
- ☐ Meter management
- ☐ Data analysis
- ☐ Penalties and fines

- ☐ Disputes and appeals on illegal connections
- ☐ Remedial processes
- ☐ Legal process
- ☐ Housing, township development
- ☐ Energy management, repairs

- ☐ Revenue enhancement and completeness
- ☐ Development Controls (illegal land use management)
- ☐ Building Inspections (building compliances)

# City Of Polokwane

## Electricity Prepaid Meter TID Rollover Status:

KRN Status	Active	Blocked	Dormant	Inactive	TID Progress %
KRN 1	5229	1111		21	10%
KRN 2	51545	431	1	3	90%
<b>Grand Total</b>	<b>56727</b>	<b>1544</b>	<b>1</b>	<b>24</b>	<b>100%</b>

Meter already replaced		14
Meter blocked	<p>Commenting on the importance of the rollover project, director at STSA Don Taylor said: <i>"The token identifier (TID) is calculated as the number of minutes that have elapsed since a defined base date of 1993 up to the time of creating the token. The TID has a limited range and will run out on 24 November 2024, when all prepayment meters based on the STS technology will stop dispensing electricity, thus presenting a significant risk to the service levels of all utilities and vendors to end-user customers in the electricity, water, and gas utilities business."</i></p>	34
Municipal Disconnection		916
No access to the meter		100
No access to the property		1632
No meter on site		243
No services on site		255
Refuse access		1403
Vacant house (Empty house)		1328



# Revenue Enhancement Initiative

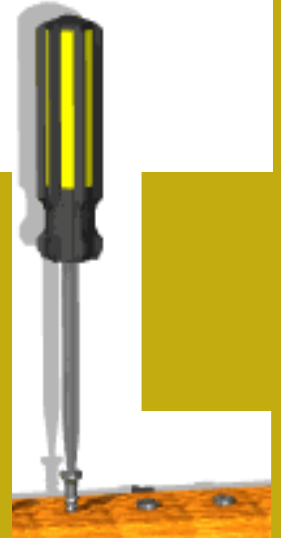
1. Faulty CTs ( incorrect measurement)
2. Incorrect Wiring ( reverse Run or Polarity Swopped)
3. Incorrect CT programming on meters
4. Incorrect Tariff
5. VT fuse blown

**Energy charges: c/kWh**

- Low Voltage: 144.51 c/kWh
- High Voltage: 142.00 c/kWh

**Demand charges: R/kVA**

- Low Voltage: R 399.10/kVA
- High Voltage: R393.40/kVA

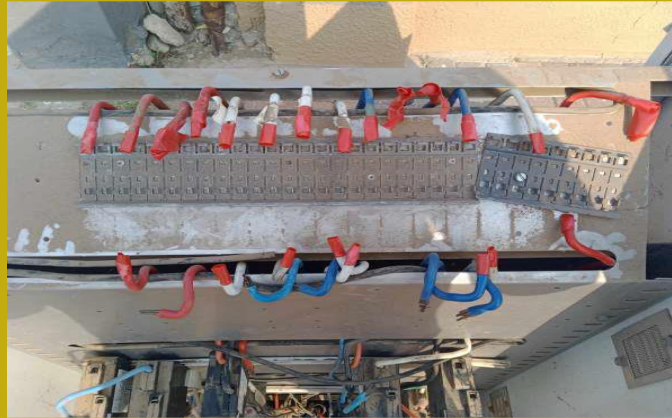




# Revenue Enhancement

		Phase 1					
Consumption month	Billing Month	Quantity Meters	Meters Exceeding baseline	Baseline Value	Billing Value	Difference	% Increase
22-Jun	22-Jul	96	86	4 483 954.11	7 838 359.68	3 354 405.57	75%
22-Jul	22-Aug	95	87	5 284 463.49	8 743 310.85	3 458 847.36	65%
22-Aug	22-Sep	95	87	5 217 357.68	8 678 887.24	3 461 529.56	66%
22-Sep	22-Oct	95	83	4 682 037.03	7 452 049.31	2 770 012.28	59%
22-Oct	22-Nov	95	82	4 892 682.08	8 044 034.85	3 151 352.77	64%
22-Nov	22-Dec	95	87	5 438 364.40	8 587 656.18	3 149 291.78	58%
22-Dec	23-Jan	95	80	5 247 214.10	7 997 319.96	2 750 105.86	52%
23-Jan	23-Feb	96	82	5 246 281.17	8 038 457.44	2 792 176.27	53%
23-Feb	23-Mar	96	81	4 792 668.65	7 171 164.32	2 378 495.67	50%
23-Mar	23-Apr	96	82	5 222 662.34	8 127 820.87	2 905 158.53	56%
23-Apr	23-May	96	74	4 072 279.26	6 286 855.76	2 214 576.50	54%
23-May	23-Jun	96	79	4 598 009.06	7 108 940.08	2 510 931.02	55%
23-Jun	23-Jul	96	87	5 392 322.90	9 426 164.11	4 033 841.21	75%
23-Jul	23-Aug	96	86	5 056 133.04	9 391 932.32	4 335 799.28	86%
23-Aug	23-Sep	93	85	5 118 153.09	9 499 616.84	4 381 463.75	86%
23-Sep	23-Oct	93	84	5 365 837.36	9 048 916.80	3 683 079.44	69%
23-Oct	23-Nov	93	84	6 195 766.21	10 618 759.87	4 422 993.66	71%
23-Nov	23-Dec	93	85	6 196 987.55	10 500 987.21	4 303 999.66	69%
23-Dec	24-Jan	93	84	6 150 260.60	10 575 063.32	4 424 802.72	72%
24-Jan	24-Feb	93	84	5 499 971.18	9 746 099.89	4 246 128.71	77%
24-Feb	24-Mar	93	82	5 060 320.81	9 454 397.29	4 394 076.48	87%
24-Mar	24-Apr	93	83	5 785 321.10	10 421 780.21	4 636 459.11	80%
24-Apr	24-May	93	82	5 717 883.53	9 634 227.19	3 916 343.66	68%
24-May	24-Jun	93	83	5 670 516.41	10 325 400.96	4 654 884.55	82%
24-Jun	24-Jul	93	85	5 750 783.61	11 041 932.47	5 291 148.86	92%
						<b>86 330 755.39</b>	

# Electricity Bypasses





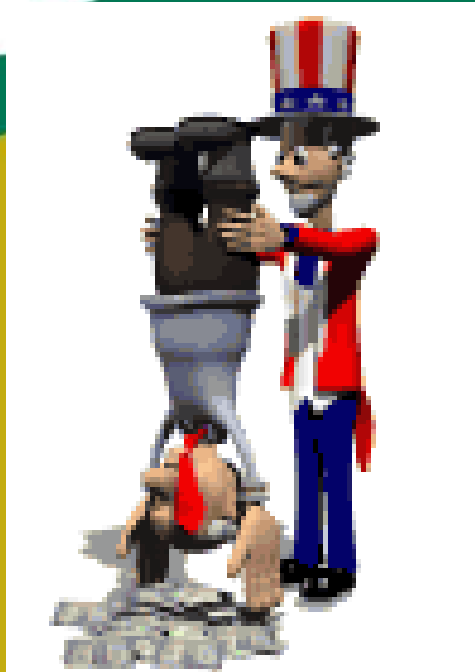
## Action plan to reduce illegal connections of services?

### Illegal Connections Penalties Increase

Financial Year: Prior 2019/2020 = R 12 651.10

Fin Yr 2020 >=R70 000

Financial year	No. of prop	Unit Price	Amount	TOTAL
2020/2021	80	RES - R70 000	R 560 0000	R 9 350 000
	25	BUS - R150 000	R 375 0000	
2021/2022	157	RES - R70 000	R 1 099 0000	R 11 430 000
	02	BUS - R150 000	R 440 000	
2022/2023	57	RES -R75 229	R 5 233 789	R 10 133 789
	15	BUS -R220 000	R 4 900 000	
2023/2024	103	RES -R75 229	R 8 526 508.34	R 9 679 308.34
	05	BUS -R220 000	R 1 152 800	
TOTAL	444		- 1,044.94 - 78,132.60 - 14,090,287.65	R 30 459 308.34



**Cut off of services due to nonpayment  
Now Vending block concurrent  
Segregation of duties minimizing collusion**

**Tsela Pedi System**

# Vending Block



PressReader



To reduce the local authority's debt book, the Polokwane Municipality recently intensified its credit control measures by implementing a vending system which renews blocks consumers who have long



LEARNERS WHO PREPARE METERS.  
The meters are then only re-activated from the municipal offices once the arrears have been settled or acceptable arrangements were made.

This action of the municipality was met with an outcry and necessitated Mayor John Mpe to call a media briefing last Tuesday in an effort to inform the public.

Mpe admitted that the dissatisfaction of some residents may stem from the lack of effective mass communication and misunderstanding of the municipality's situation, thus the need for clarification.

"Just like any other municipality in the country, Polokwane Municipality requires revenue from all its ratepayers to deliver quality basic services to its residents and businesses as part of securing the future of the city and its people. "The municipality is committed to improve revenue collection but is also not oblivious of the socio-economic situation in the country and has in place measures to cushion indigent households," Mpe explained.

According to the mayor, a recent financial analysis depicted that the account payment rate has been decreasing from 80%

on the 1st and after the main combine.

"This is 20% of 1 All 16 5 200 ind pending how even indigent their ind Mpe said.

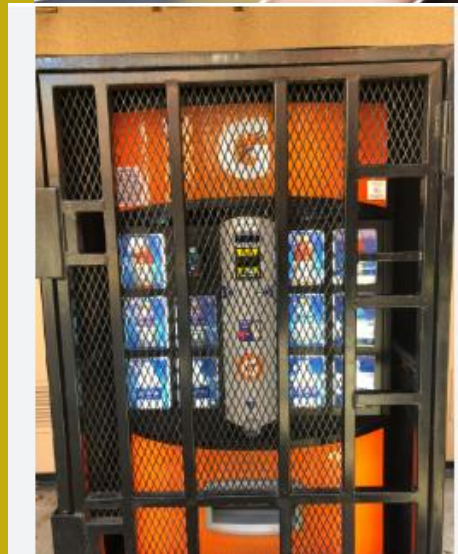
The m June 7, i unblock, remains amount through consists an arrear business a single After his 000 was to settle Mpe co mobilise employe, creating

"We h last conq technique of credit access to physical supplies, make us

Polok



MUNI BLOCKS PREPAID METERS - PressReader





# Government and Top Debtors



Polokwane Municipality takes drastic steps to recover  
R252m | Review

[Visit](#)



# Maintenance



TechCabal  
load shedding ...



ActionSA  
Eskom Appeal of Load Shedding Court ...



EZSOL  
Return to Stage 6 Loadshedding | EZSOL



isite Computers  
Load Shedding and Your Business ...



The Mail & Guardian  
Practical steps to stop load-shedding ...



The LpGas Man  
Load Shedding? Switch to gas – The ...



George Herald  
Seven load shedding life hacks to k...



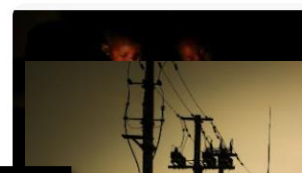
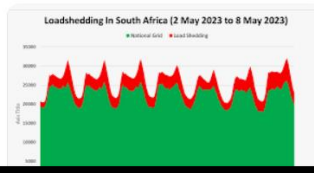
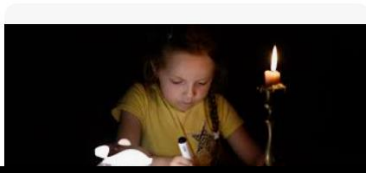
South African  
Stage 11 load shedding: What is it, an...



Affinity Health  
Living With Load Shedding - Affinity Health



Sinetech Store  
Load-shedding Is Dead! Long-live Load ...



minimum of 6% of total cost (before profit margin) will be allowed for repairs and maintenance. Repairs and maintenance expenditure exceeding 6% will be assessed on a case-by-case basis by the Energy Regulator.

Nersa  
<https://www.nersa.org.za/uploads/2020/09/PDF>  
**ST OF SUPPLY FRAMEWORK - Nersa**



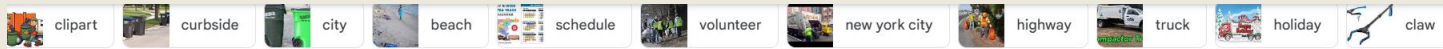
Stage 8 load-shedding on the cards, energy expert warns

Visit >

# Garbage Collection Refuse Removal



1929 - 2024



RT Opdenaker  
Residential Trash Pickup Services ...



Magic Clean -  
Garbage Collection Services -



KPMG  
Garbage collection - KPMG Belgium



Connect2Local  
Benefits of Routine Garbage Collection ...



Kamtix Cleaners  
Garbage Collection and Waste Man



Facebook  
Nairobi Kenya Poja City Cleaners Ltd



EnvMart.com  
MSW Door-to-Door Collection L&R



Kamtix Cleaners  
Garbage Collection and Waste Managemen



Solcity Cleaning Services  
Garbage Collection Services in Nairobi



BioCycle  
Trash Collection





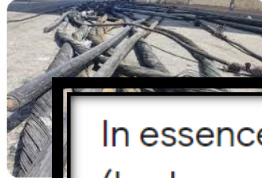
# Cable Theft very Costly after Load



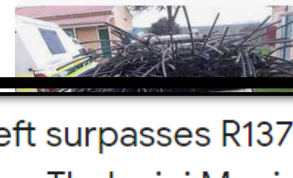
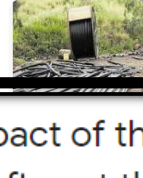
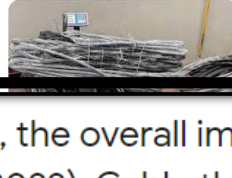
ws24  
e theft is economic sabota...



Bloomberg  
Copper Cable Thefts Disrupt Sout...



MyB  
Coppe



In essence, the overall impact of theft surpasses R137 million per day (Leshoro, 2022). Cable theft cost the eThekweni Municipality R40 million during the 2022/2023 financial year, necessitating the replacement of six tonnes of stolen cables. 01 Jan 2024



Sabinet African Journals

<https://journals.co.za> › doi › ejc-servamus\_v117\_n1\_a8

Copper Cable Theft: Dangerous and costly



mocratic Alliance  
1 000 in stolen copper cable, ...



News24  
Cable thieves now armed with ...



SA  
Cabl



Transnet reported 1 121km of cable stolen in the 2023 financial year, a nearly eight-fold increase over five years. In addition Eskom copper theft is reckoned to cost R5-7 billion a year, plus another roughly R2 billion to replace stolen cables. 16 Feb 2024



South African Government

<https://www.gov.za> › blog › metals-theft

Metals theft | South African Government

# Water Infrastructure Subotage

## ✓ Content

### A new type of mafia is thriving in South Africa

18 Oct 2023 — A new type of **mafia** is thriving in **South Africa**. Several parts of **South Africa** are struggling with **water** shortages as taps d



Engineering News

<https://www.engineeringnews.co.za> › article

### The Water Mafia crisis sees SA

29 Nov 2023 — The **South African** water s  
notorious 'construction mafias', **water** or tan

### SA'S WATER CRISIS

'MAFIAS' SABOTAGE INFRASTRUCTURE TO  
CONTINUE PROVIDING WATER TANKERS



BusinessTech

<https://businesstech.co.za> › News › Government

### 'Tanker mafias' scoring big in South Africa

14 Feb 2024 — The **water** crisis in **South Africa** is expected to worsen in 2024 d  
infrastructure, and criminal syndicates – dubbed 'tanker ...

## Videos



Discussion | 'Water tanker mafia' said to be rife

YouTube · eNCA

20 Oct 2023





# Revenue Generating Threat

Thursday, 11 Apr • 14:37

Texting with +2781160004099799 (SMS/MMS)

Message from SAPS. Case registered on 2024-04-11 at WESTENBURG Station. ref nr CAS 107/4/2024 - contact details: . Do NOT reply to this SMS.

14:37

Friday, 12 Apr • 08:21

Texting with +2781160004088066 (SMS/MMS)

Message from SAPS. WO. RM LEDWABA will investigate your case WESTENBURG ref nr CAS 107/4/2024. Unit contact details: . Do NOT reply to this SMS.

08:21

# Revenue Generating Threat

Friday, 19 Apr • 09:36

Texting with +2781160004095862 (SMS/MMS)

Message from  
SAPS.Investigation in  
WESTENBURG ref nr CAS  
107/4/2024- all leads  
followed up - case closed.  
Docket will be re-opened  
upon new leads. Do NOT  
reply to this SMS.

09:36

# The Key is to Protect The Revenue



Sometimes at All Cost



**Protecting Revenue Base**

