



# **ESKOM FORCED LOADSHEDDING**

## **IMPACT ON POLOKWANE CITY**

### **COUNCIL**

- **IMPACT**
- **LOSSES**
- **MANAGE LOADSHEDDING**
- **10% MAX. DEMAND in KVA**
- **10% KW hr saving in units**
- **DME / ESKOM / NERSA**



# **LOADSHEDDING IMPACT**

- » **ESKOM**
- » **Faults on Network**
- » **Productivity Losses**
- » **High Maintenance Cost**
- » **Operational Cost**
- » **Customer Issues**
- » **Labour Issues**

# LOSSES

- **INCOME** to Council => **2007/2008 - R 3.6 million**  
=> **2008/2009 - R24,1 million**

- **Additional Expenditure** to Council

- **Productivity / Focus** on Service Delivery

- **LOSSES TO INDUSTRY / BUSSINESSES**

**SALES**

**PRODUCTIVITY**

**MAINTENACE**

**=> 50Bn to S.A**

# DME Targets – based on 10% overall max Demand and Energy saving:

- Industrial – 12.5%
- Commercial (general) – 18.75%
- Hotels, resorts, shopping malls & conference centres – 25%
- Large office buildings + government, municipal & electricity utility offices – 18.75%
- Agriculture – 6.25%
- Residential – 12.5%
- Special cases – no initial savings target
  - e.g. hospitals, clinics, traffic lights, 2010 projects, Eskom build, Eskom supply collieries

# Polokwane Customers Profile

<b>Category</b>	<b>Number of customers</b>	<b>Sales MWh</b>	<b>% of total</b>
<b>Residential</b>	<b>45 000</b>	<b>248 500</b>	<b>45</b>
<b>Industrial</b>	<b>770</b>	<b>236 000</b>	<b>42,7</b>
<b>Commercial</b>	<b>2 900</b>	<b>47 000</b>	<b>8,5</b>
<b>Municipal</b>	<b>1</b>	<b>21 200</b>	<b>3,8</b>
		<b>552 700</b>	<b>100</b>

<b>Polokwane Large Customers</b>	<b>% Income</b>	<b>% MWh CONSUMPTION</b>
<b>30 Largest customers</b>	<b>37,4</b>	<b>21,6</b>
<b>50 Largest customers</b>	<b>43,8</b>	<b>26,8</b>
<b>100 Largest customers</b>	<b>55,0</b>	<b>31,0</b>
<b>Residential Customers</b>	<b>35,0</b>	<b>45,0</b>
<b><i>Streetlights</i></b>		<b>0,19</b>
<b>Traffic Lights</b>		<b>0,000017</b>

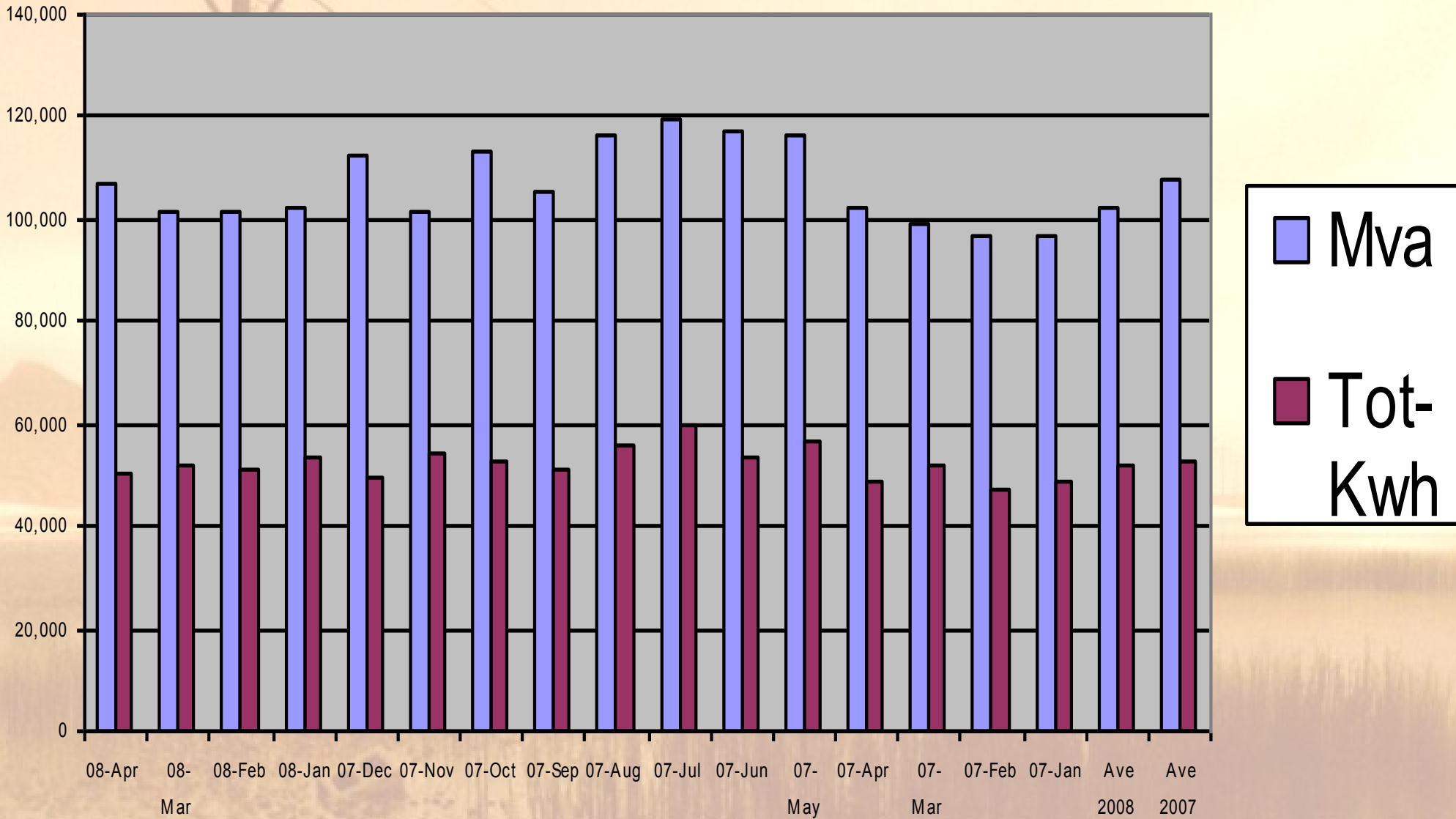
# **Polokwane Action Plan Implementation**

Start “ The Business Energy Forum ”

Council Adopted a Power Conservation Programme

- Council Buildings and Plant
- Residential Customers
- Media Champagne on how Households can save Electricity
- Management of Electrical Consumption on SCADA System

# POLOKWANE RELATION OF MVA vs KW h

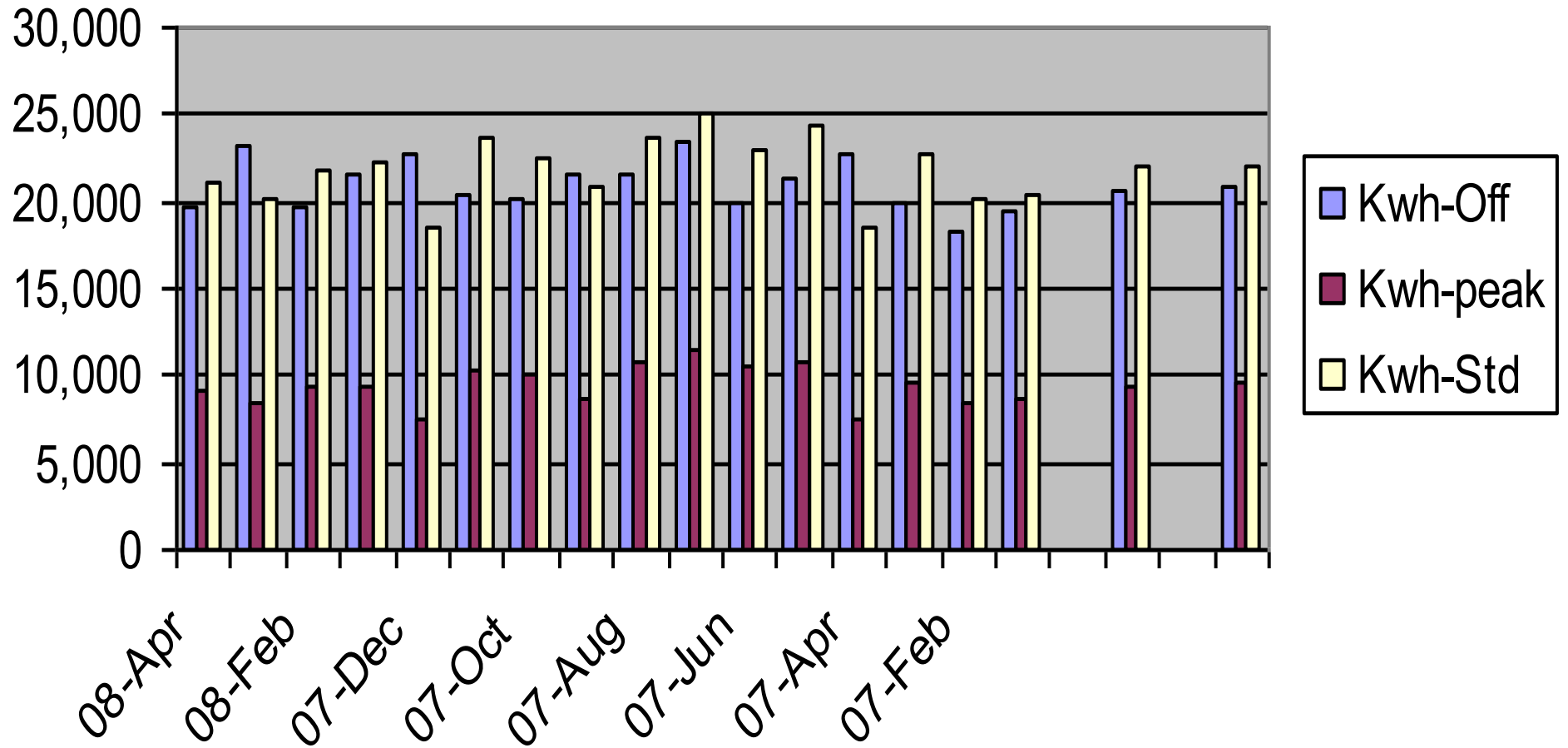


17 July 2008

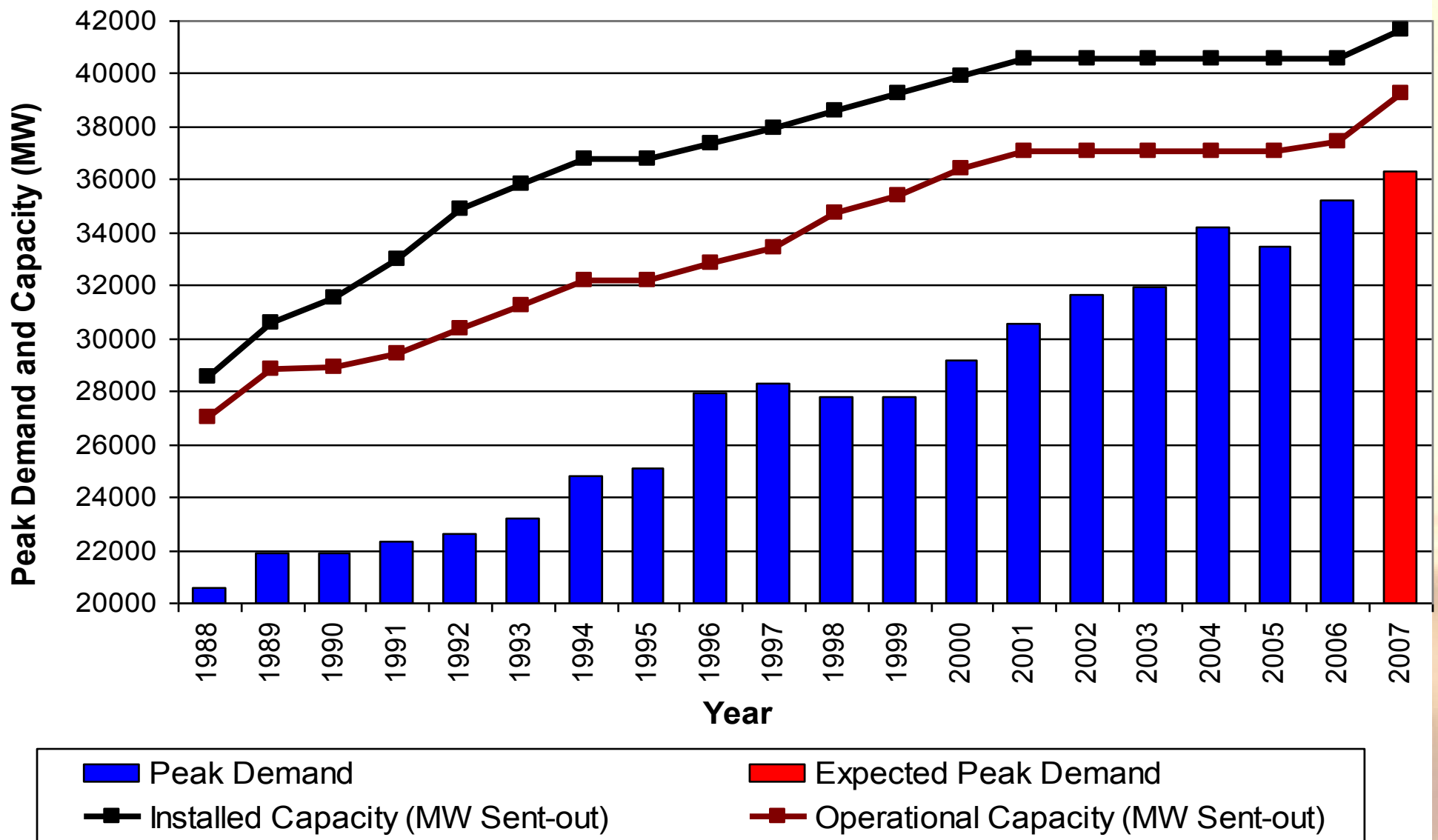
W OLIVIER



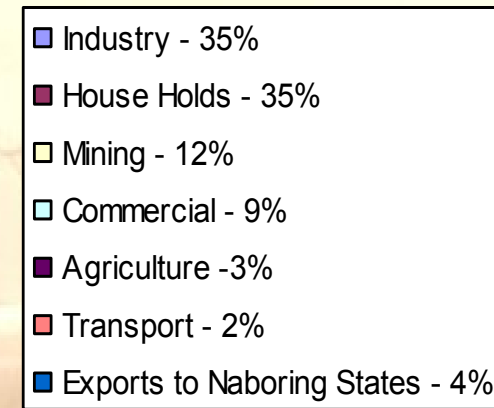
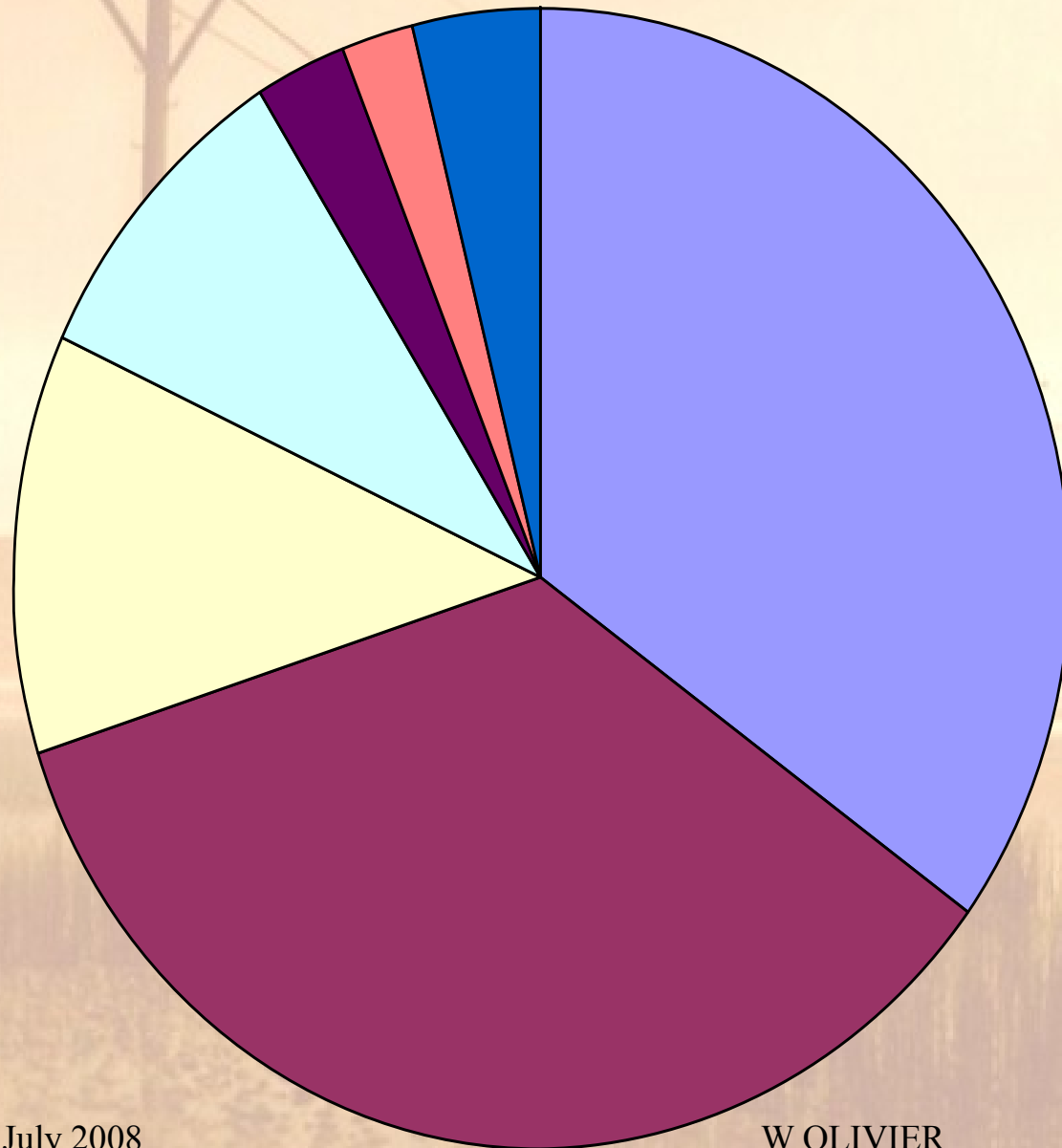
# POLOKWANE CONSUMPTION KWh



# Peak demand (MW)



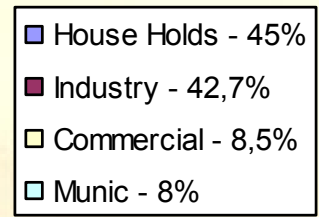
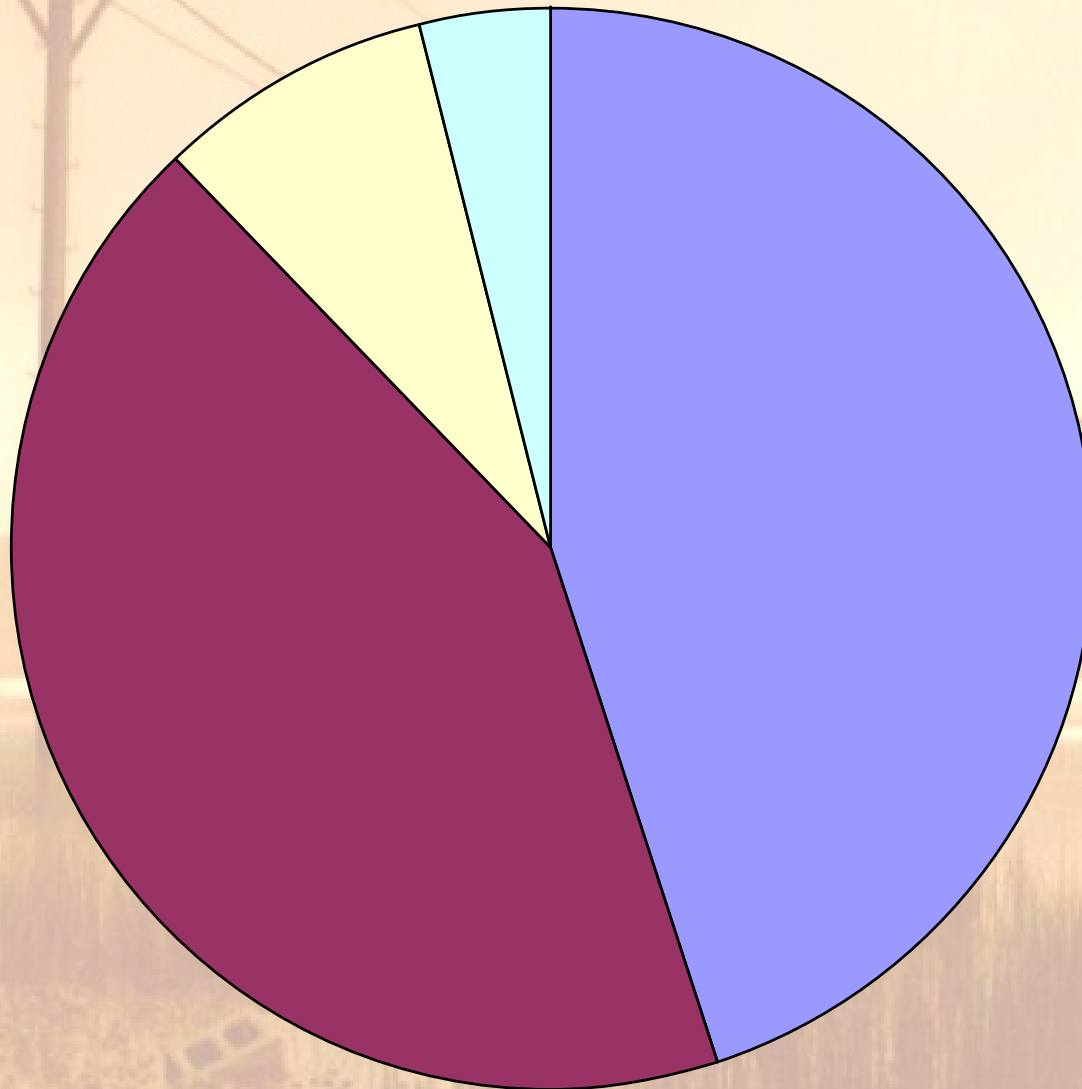
# S.A. PEAKTIME ELECTRICITY



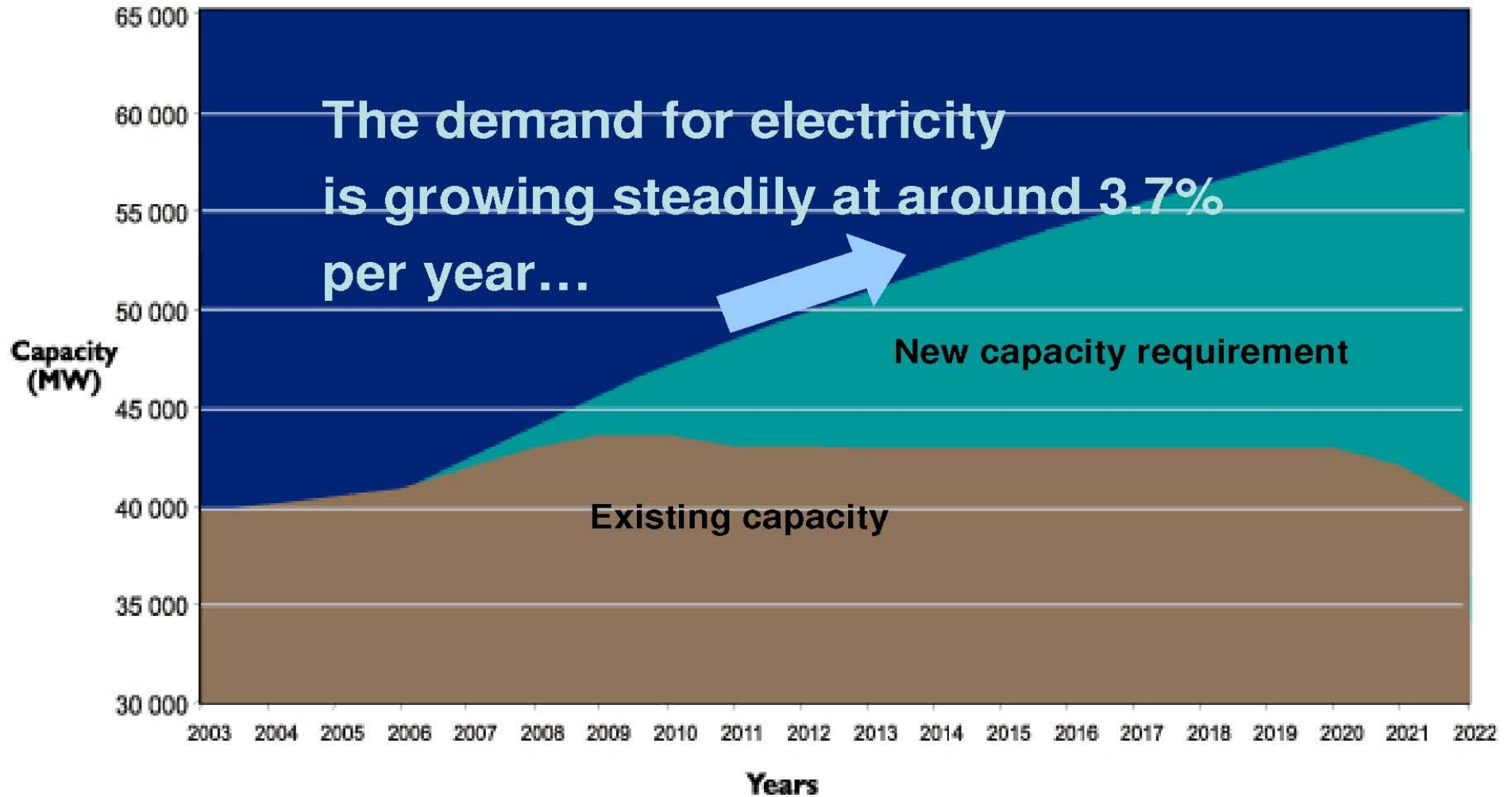
17 July 2008

W OLIVIER

# Polokwane Profile



# 1) Lack of supply capacity.

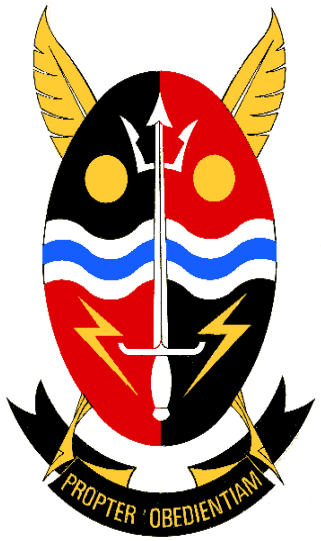


# CHALLENGES FOR THE FUTURE

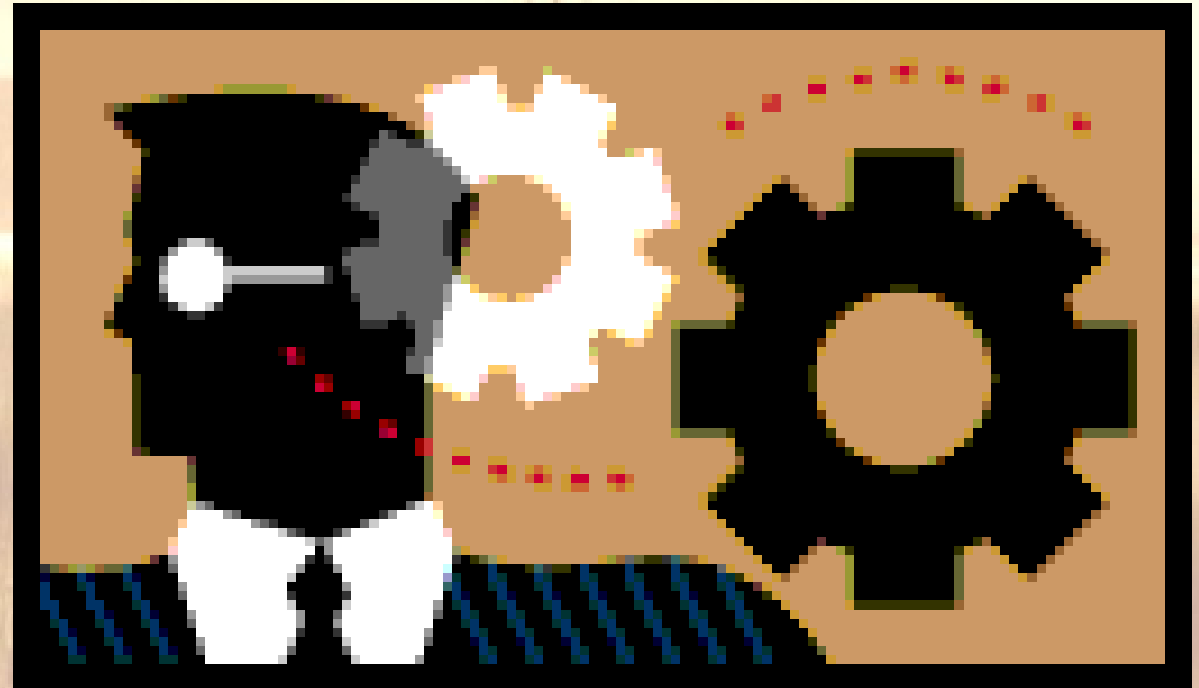
- REDUCE MVA
- REDUCE K<sub>w</sub>H CONSUMPTION ( 10 % )
- Become Energy efficient
- Stay in Business ( Munic's & Industries )
- Plan to save Electricity
- What can I / We do to make a difference ?

# CHALLENGES FOR THE FUTURE

- DME – New Regulations / New Power Stations
- ESKOM – Tariffs / Goal / Vacancies / Maint.
- NERSA – Tariff Approval / Regulator
- POLOKWANE BUSINESS ENERGY SAVING FORUM => ( 10% MVA & KWh )
  
- ? => Outcome of Future for all of Us



Questions ? ? ?







17 July 2008

W OLIVIER